



discover tomorrow together



a welcoming university

At Western, you can explore your interests, engage in research, and prepare to change the world.

Building a better you

A home for curious problem solvers, Western is focused on progress. Transformative teaching and research collaboration inspire students to make the world a better place.

Western's community spirit and supportive professors make it the perfect place to follow your passion. Make Waves at Western.

Contents:

- | | |
|-----------------------------|--------------------------------|
| 4. Shape the future with us | 14. Popular majors |
| 6. Adventure is knocking | 16. International Study Center |
| 8. Your new home | 18. International Year |
| 10. Where you belong | 20. Pre-Master's Program |
| 12. A choice of majors | 22. How to apply |

#3 Top
Public School Regional
Universities West

(US News & World Report, 2020)

World-changing alumni

There are more than 115,000 Western graduates living and working around the world, including:

TJ Martin ('05)

Received an Oscar for Best Documentary Feature for his film "Undeclared." He is the first director of African-American descent to win an Oscar for a full-length feature film.

Vini Elizabeth Samuel ('94)

Attorney and first Indian-American woman elected mayor in the United States.

Jesse Dean Moore ('05)

Associate Director of Public Engagement during Obama administration.

Ken Johnsen ('75)

Project director for the renovation of Seattle's historic Pike Place Market and King Street Station.

Western graduates are competitive in gaining admission to a broad range of programs in the U.S. and abroad, including:

• Vanderbilt University

Medical Physics (ranked 15th nationally)

• George Washington University

Environmental Resource Planning (ranked 70th nationally)

• University of Washington

Genome Sciences (ranked 62nd nationally)

• University of Oregon

Polymer Science (ranked 104th nationally)

• Arizona State University

Physics (ranked 117th nationally)

• Washington State University

Pharmacy (ranked 66th nationally)

All rankings U.S. News & World Report

International Students have gone on to Optional Practical Training (OPT) Placement at:

• Amazon

• Michael Kors

• Starbucks

• H&M

• Bellingham School District

• Visa Inc.

• AT&T

• Abercrombie & Fitch

shape the future with us

Learn more about the world around you in a supportive environment, where you can define yourself and help make a difference.

Collaborate and achieve success

At Western you will receive personal attention to ensure you achieve your goals. 99% of all classes are taught by faculty, many holding the highest degree in their field. You will collaborate with professors and other students in small classes, so you can fully engage with new ideas.

Leading research to change the world

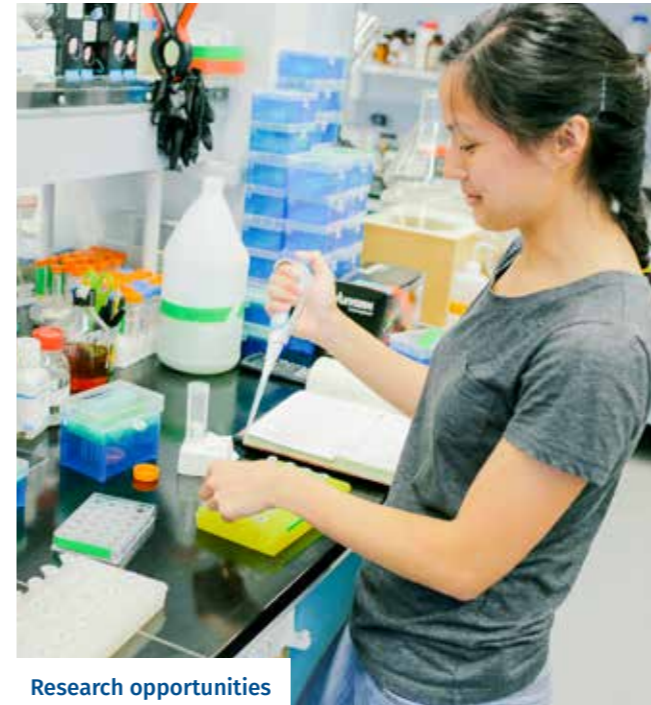
From the moment you arrive you will be a part of a community committed to world-leading research. You will have the opportunity to take part in research projects as an undergraduate student, giving you practical experience in your field before you graduate.

Explore your interests

A strong liberal arts tradition means ambitious students like you can explore every interest. Your degree will be a combination of classes focused on your chosen field, with the freedom to learn in other areas. With this varied approach to learning you will become a well-rounded citizen, able to communicate effectively and look at problems in new ways.

Prepare for your future

You will be supported by mentors and have access to career services to seek opportunities and grow your network. Viking CareerLink is an online job and internship database, at any given time, there are 800+ career and internship opportunities active. Students at Western go on to exciting careers for leading global companies including Microsoft, Boeing, Google and Amazon.



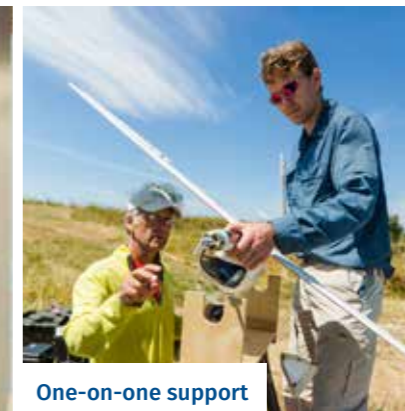
Research opportunities



Hands-on experience



Supportive student community



One-on-one support



Small class sizes

18:1
student-faculty ratio.

Top 10
for grads who go on to earn research doctorates
(Survey of Earned Doctorates)

96%
of undergraduates were either employed or continuing their studies within six months of graduating.

Bellingham named sixth
best city
to live in Washington
(Chamber of Commerce, 2019)

Seattle is the
#9 best
place to live in the US
(US World News & Report, 2019)

Washington
#1
best state
(US News & World Report, 2019)

Located between two world class cities,
you will love Bellingham's breathtaking
scenery and active community.

adventure is knocking

The Bellingham lifestyle

Bellingham is a safe, clean city where community and adventure meet. You will quickly feel at home here, where you can relax on Western's green campus, head to the vibrant downtown for coffee shops, live music, and a thriving arts scene. Bellingham has been noted for its cultural diversity, with its beautiful setting, climate, and relatively low costs for a West Coast location bringing many migrants to the area.

Get outside

Bellingham, Washington and the surrounding Whatcom County are known for abundant nature, outdoor adventure and sweeping scenery. Make the most of the opportunity to visit stunning locations such as the Salish Sea, Mt. Baker and North Cascades National Park.

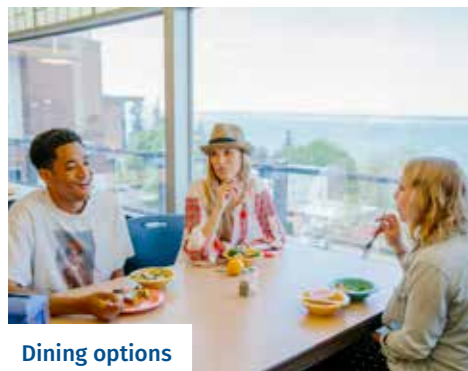
Some favorite outdoor activities in Bellingham include mountain biking, skiing, snowboarding, kayaking, hiking, trail running, paddle boarding and many more.

Share the experience

Life at Western means getting involved and having a passion to try new things. With over 250 student clubs and organizations you will never be short of things to do. Visit the Underground Coffeehouse on campus for great coffee, food, and live music, cheer on the Vikings at a game, or simply relax across Western's 215-acre campus with ample green spaces and captivating sculptures.

Discover iconic cities

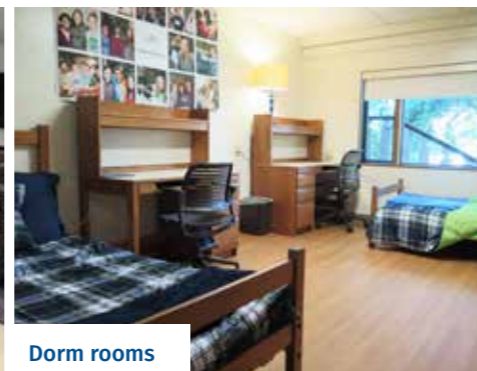
Bellingham is located between the big cities of Vancouver B.C., Canada and Seattle, Washington. With an easy drive or train ride from Bellingham you can experience the best features of city life. Visit the world famous Space Needle or Pike Place Market in Seattle, or visit the world renowned Stanley Park in Vancouver for an exciting day out.



Dining options



Recreation room



Dorm rooms

“

One of the places that I love to spend time studying or hanging out with friends is the Viking Union cafe. Nothing beats great coffee and a comfortable place to quietly study or chat with friends. The WWU community and most of all the International Student & Scholar Services has helped me so much and made me feel comfortable in my ‘home away from home.’”

Tina from Japan
Studying Early Childhood Education

180
acres of forest
adjacent to campus.

88%
of freshmen choose
to live on campus
during their first year
at Western.

your new home

Choose from a selection of different housing options to suit you as you settle into life in the USA.

Feel at home

You can live in one of 16 residence halls at Western, each with its own unique architecture and community. Most offer double rooms with shared living spaces, allowing you to easily make new friends and integrate to life here. There are residences to suit all lifestyles, whether you want to live in alcohol-free areas or with students who share your academic interests.

Your new room

Every room is furnished with a twin bed, desk, chair and clothing storage for each student. Most beds are extra-long and most can be set up as bunks or adjustable-height singles so you can decide what works for you and your room mate. Wireless Internet is included.

All you need

Each dorm community has a front desk, laundry facilities, community kitchens, study areas, computer lab, TV lounge, piano, game room, bike storage and limited permit parking.

Dining services on campus

Western Washington University has three dining halls offering All-You-Care-To-Eat dining for breakfast, lunch, dinner and late night dining. At each dining hall, meals are prepared under the watchful eye of a chef. Vegan, vegetarian and made without gluten options are offered daily. Nutritional consultation and menu planning is available for those with dietary restrictions and food sensitivities.

Western dining works with international students to observe their religious beliefs. In observance of Ramadan in 2019, Western included the option to pre-order food and take part in a number of community events including potluck-style events.

In addition to the dining halls, Western has other eateries like the Viking Union Market, Panda Express, Subway, Miller Market, Oath Pizza, Zoe’s Bookside Bagels, Starbucks, Underground Coffee, and Freshens.



15 varsity sports



Thriving arts community



Over 200 clubs



Cheer on the Vikings



“

Western is very welcoming and the community is really welcoming. Every time I interact with people, they welcome me with open arms. Everyone is so supportive at Western and I feel like I am home, so I don't really miss home that much."

Amir from Pakistan
Studying Biochemistry

where you belong

Students at Western support each other and work together to have an impact on the world. You will easily find the perfect balance between your studies and becoming part of an active community.

Live on a green campus

As one of the first environmental colleges in the nation, students at Western take pride in the community commitment to sustainability. Every year, students vote to continue the 100% renewable energy program on campus, and the University Dining Services has zero-waste initiatives at all dining locations. Following a student-led initiative, state-of-the-art composting bins have been installed in every dorm room on campus. You will love living on a green campus with fresh air and great scenery.

Get involved

All students are encouraged to join the Western community by getting involved on campus. You can try something new in over 250 student-led clubs, 30 intramural sports, a debate team, comedy troupe, and many more academic, community services, arts, and professional societies. Explore your interests while meeting new people and building lasting relationships.

A selection of the student clubs on campus:

- Artificial Intelligence Association
- Association of Engineering and Environmental Geologists
- Communication Club
- Global Ambassadors
- International Business Network
- Students for Renewable Energy
- Arab Student Association
- Middle Eastern Student Association
- Chinese Student Association
- WWU Hikes
- Vietnamese Student Association

You are welcome here

Western Washington University places a distinct importance on inclusion and safety, taking all possible steps to help ensure an exceptional experience while living and learning on campus, including on-campus security, emergency call boxes, campus escort service and safe ride transportation.

Join in on the conversation via social media to find out more about the nationwide campaign, letting the international community and future students around the world know that **#YouAreWelcomeHere**.

a choice of majors

Undergraduate Degrees

College of Business and Economics

- Accounting, BA +
- Business Administration +
 - Finance, BA
 - International Business, BA +
 - Management, BA
 - Management Information Systems, BA
 - Marketing, BA
 - Operations Management, BA
- Economics, BA +
 - Economics/Accounting, BA
 - Economics/Environmental Studies, BA
 - Economics/Mathematics, BA
 - Economics/Political Science, BA
 - Economics/Social Studies, BA
 - Financial Economics, BA
- Manufacturing and Supply Chain Management, BS +

College of Fine and Performing Arts

- Art *
 - Art Elementary, BAE
 - Art - P-12, BAE
 - Art History, BA +
 - Art Studio, BA, BFA *
- Dance, BA, BFA +*
- Design, BA, BFA +
- Music, BA, BMus +*
 - Music Composition, BMus
 - Music Education, P-12, BMus
 - Music History and Literature, BMus
 - Music Performance, BMus
- Theatre Arts, BA +*

College of Humanities and Social Sciences

- Anthropology, BA +*
- Anthropology/Biology, BA
- Anthropology/Social Studies, BA
- Anthropology, BA
 - Archaeology, BA
 - Biocultural, BA
 - Elementary, BAE

- Behavioral Neuroscience, BS
- Chinese Language and Culture, BA +*
- Communication Sciences and Disorders, BA +
- Communication Studies, BA +*
- Community Health, BS
- East Asian Studies, BA +
- English +*
 - Creative Writing, BA +*
 - Literature, BA *
- French, BA +*
- French - Elementary, BAE
- French/German, BA
- French/Spanish, BA
- German, BA +*
- German - Elementary, BAE
- German/Spanish, BA
- History, BA +*
 - History - Elementary, BAE
- History/Social Studies, BA
- Humanities +*
 - History of Culture, BA
 - Religion and Culture, BA +
- Japanese, BA +*
- Journalism
 - News/Editorial, BA +
 - Public Relations, BA +
 - Visual Journalism, BA
- Kinesiology
 - Health and Fitness Specialist, BS *
 - Exercise Science Specialization, BS
 - Pre-Healthcare Professions, BS
 - Pre-Physical Therapy, BS
 - Sport Psychology, BS +
- Latin American Studies, BA
- Linguistics, BA +
- Multidisciplinary Studies, BA
- Philosophy, BA +
- Physical Education & Health P-12, BAE
- Political Science, BA +
 - Political Science/Social Studies, BA *
 - Politics/Philosophy/Economics, BA
- Psychology, BS +*
 - Psychology: Human Development - Elementary, BAE

- Recreation Management and Leadership BA
- Sociology, BA, BS +*
- Sociology - Elementary, BAE
 - Sociology/Social Studies, BA +
- Spanish, BA +*
 - Spanish - Elementary, BAE
- Student/Faculty Designed, BA, BS
- Women, Gender and Sexuality Studies, BA

College of Science and Engineering

- Biology, BA, BS +*
 - Biology/Anthropology, BS
 - Biology/Mathematics, BS
 - Biology - Secondary Teaching, BS
 - Ecology, Evolution, and Organismal Biology (EEO) Emphasis, BS
 - Marine Biology, BS
 - Molecular and Cell Biology, BS
- Chemistry, BA, BS +*
 - Chemistry/Biology - Secondary, BAE
 - Chemistry/Mathematics - Secondary, BAE
 - Chemistry/Physics - Secondary, BAE
- Biochemistry, BS
- Computer Science, BS +
 - Cybersecurity, BS Δ
- Earth Science (Elementary or Secondary), BAE
- Earth Science/General Science - Secondary, BAE
- Engineering & Design
 - Electrical Engineering, BS
 - Industrial Design, BS
 - Manufacturing Engineering, BS +
 - Plastics and Composites Engineering, BS
- General Science (Elementary, Middle or Secondary), BAE
- Geology, BA, BS +*
 - Geophysics, BS
- Mathematics, BA, BS +*
 - Applied Mathematics, BS
 - Mathematics/Computer Science, BS
 - Mathematics - Elementary Education, BAE
 - Mathematics - Secondary Education, BAE
 - Physics/Mathematics - Secondary Education, BAE
 - Statistics, BS
- Physics, BS +

Huxley College of the Environment

- Business and Sustainability, BA +
- Environmental Science, BS +
 - Marine Science, BS
 - Toxicology
- Environmental Studies, BA +*
 - Environmental Education, BA
 - Environmental Policy, BA +
 - Environmental Studies - Elementary, BAE
 - Geography, BA +*
 - Geography - Elementary, BAE
 - Geography/Social Studies, BA
 - Urban Planning and Sustainable Development, BA +

Institute for Energy Studies

- Energy Policy and Management, BA
- Energy Science and Technology, BS

Fairhaven College of Interdisciplinary Studies

- Interdisciplinary Concentration, BA, BAE
 - Law, Diversity and Justice Concentration, BA +
- Upside-Down Program (Fairhaven College), BA

Woodring College of Education

- Early Childhood Education, BAE *
- Early Childhood Special Education, BAE
- Elementary Education Professional Program *
- Exceptionality & Disability, BAE
- Human Services, BA
- Language, Literacy and Cultural Studies, BAE
- Secondary Education Professional Program
- Special Education, BAE *

Other interdisciplinary studies

- American Cultural Studies, BA +
- Canadian-American Studies, BA +
- + minor offered (additional minors in a range of disciplines are also available)
- * related teaching endorsement offered
- Δ requires specialized transfer degree

(BA) Bachelor of Arts degree
(BS) Bachelor of Science degree
(BAE) Bachelor of Arts, Education degree
(BMus) Bachelor of Music degree
(BFA) Bachelor of Fine Arts
(BSN) Bachelor of Science in Nursing

This list of academic programs is subject to change.

Pre-Professional Pathways**

- Pre-Chiropractic, PreProf
- Pre-Dentistry, PreProf
- Pre-Law, PreProf
- Pre-Medicine, PreProf
- Pre-Nursing, PreProf
- Pre-Nutrition, PreProf
- Pre-Occupational Therapy, PreProf
- Pre-Optometry, PreProf
- Pre-Pharmacy, PreProf
- Pre-Physical Therapy, PreProf
- Pre-Physician Assistant, PreProf
- Pre-Veterinary, PreProf

**The Pre-Professional Pathways are not offered as majors, but can be incorporated into or taken alongside majors offered at Western.

Special interest courses

Western believes that active minds change lives, which is why you can choose from a selection of more physical yet credit-bearing electives to complement your academic studies and try something new.

Electives*:

- Beginning Skiing/Snowboarding
- Beginning Martial Arts
- Beginning Sailing
- Sailboat Racing
- Beginning Windsurfing
- Basic Kayak Touring
- Beginning Swimming
- Beginning Yoga
- Intermediate Yoga
- Beginning Weight Training
- Beginning Pilates
- Zumba
- Badminton
- Beginning Pickleball
- Beginning Racquetball
- Beginning Soccer
- Beginning Kickboxing
- Beginning Ultimate Frisbee
- Beginning Self-Defense

*Please note these are fee-based classes that are not included in tuition costs.

popular majors

99%
of classes are taught by faculty, instead of graduate assistants, so you are getting a high quality education from experts in the field.

74%
of Western's faculty hold the highest degree in their field.



Zero-net housing



Students working in the lab

Accounting

Accounting is an important tool used by managers to plan, control and report financial activity. A thorough knowledge of Accounting is necessary to understand the operation and financial condition of any business, non-profit organization or governmental agency.

The Accounting curriculum at WWU provides a basis for students who plan to take examinations to become a Certified Public Accountant (CPA) or Certified Management Accountant (CMA).

#1
Best Accounting Programs for the Money in Washington.
College Factual, 2018

Western Washington University Accounting students earn **27.3%** more than the average accounting student.

Environmental Science

Environmental Science draws on basic knowledge of the physical, chemical, biological, and quantitative aspects of natural systems.

The Department of Environmental Sciences is affiliated with three research institutes. These institutes support and promote Western's instructional and research programs in the environmental sciences. They also provide access to laboratory facilities, instruction and specialized research equipment.

Explore natural marine habitat at our 78-acre off-campus coastal research facility, the Shannon Point Marine Center, or head into the mountains with the Mountain Environments Research Institute.

Located between the mountains and the bay, Western is ideally situated for field work.

Students are designing and building a zero-net-energy house to address local housing issues and educate the University and community about sustainable home design.

Industrial Design

Industrial Design prepares graduates to begin working as practicing designers in corporate, consulting, or entrepreneurial positions.

This program is unique because it is a Bachelor of Science, not Arts, which means more math, physics and engineering to give you a solid foundation for the profession. Despite this, art is still an important aspect of the program in order to design creatively.

Washington state has over 50 industrial design firms, mostly in Seattle that may offer summer internships. Many WWU students have worked with Microsoft, Burton, Boeing, Bose, Nike, Oculus, Intel, Tactile, and other companies.

The Class of 2018 was awarded the Student Design Open Category by Gray Magazine for their Cube³ modular housing design.

A recent study of ID graduates from 2007-2015 show that **96%** are working as professional designers.

Manufacturing and Supply Chain Management

This is a business degree that prepares students for supply chain operations and manufacturing management related careers. The degree combines sciences in the core requirement classes, strong core business classes, three engineering classes, a relevant selection of required and elective Operations Management classes, and 6 months of directly related internship work experience.

MSCM graduates find challenging and rewarding careers that are in high demand and have a 97% placement rate at graduation.

WWU's Manufacturing and Supply Chain Management program was ranked **#6** in the world.
SCM World, 2017

Graduates have gone on to work at prestigious organizations such as Boeing, Microsoft, Amazon, Starbucks, and the Bill and Melinda Gates Foundation.

Plastics and Composites Engineering

Students in Plastics and Composites Engineering (PCE) study the relationship between molecular structure, material properties and performance, and the manufacturing of polymers, composites materials, and products. You will work closely with industry-leader Zodiac Aerospace to solve real-world problems, like creating aircraft fasteners without the use of toxic cadmium. Graduates have unique expertise with the materials they help develop, expertise that have lead directly to job offers.

Faculty and students work with companies such as Nike, PACCAR, PEXCO, QUATRO COMPOSITES, R&D Plastics, Tethers Unlimited, and Zodiac Aerospace.

One of four programs in the USA that have been accredited to offer instruction on thermoplastic processing, and the only one in Western USA.

International Study Center

Take the first steps towards your future at the International Study Center. Join the community and earn credits towards your degree at Western Washington University.

Supported study

Our experienced teachers will support you to adjust to life in the U.S. while introducing you to the many opportunities at Western. During your program you will live and learn on campus with access to the University's facilities, services and student organizations. It won't take long for you to become an active part of the community.

Global Pathway Programs

The Global Pathway Programs at the International Study Center are designed for ambitious international students who want to learn more about the world. We will help you to develop the English language, study skills and academic knowledge needed to succeed.

Career ready

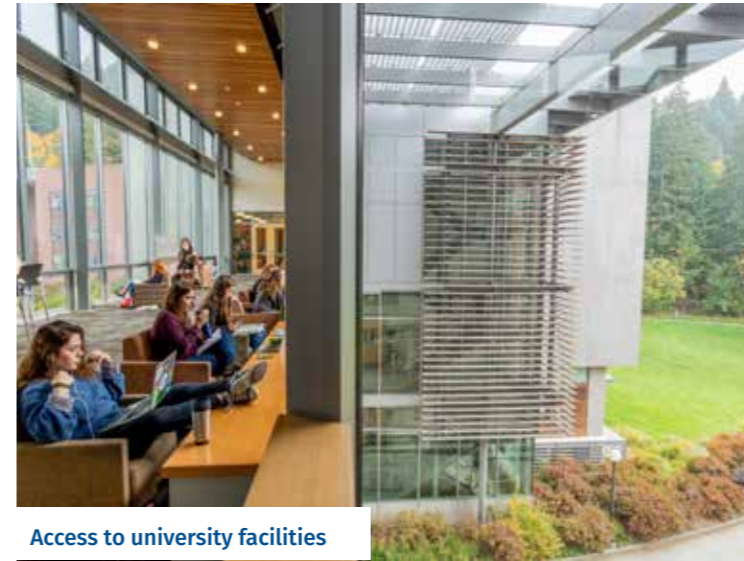
We will ensure that your program is career-focused and that you are developing skills for your future every step of the way. Our integrated CareerAhead services will help you gain valuable skills in leadership, organization, and communication to enhance your employability.

Improve your English

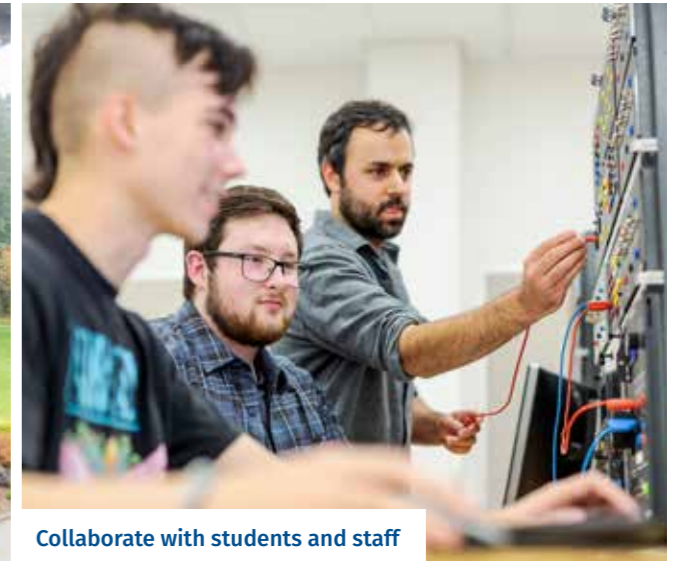
If you need to improve your English language level before starting your program, you can start your journey with the Intensive English Program.

Delivered by Western, the Intensive English Program offers six levels of coursework to help you develop your speaking, listening, reading, and writing skills.

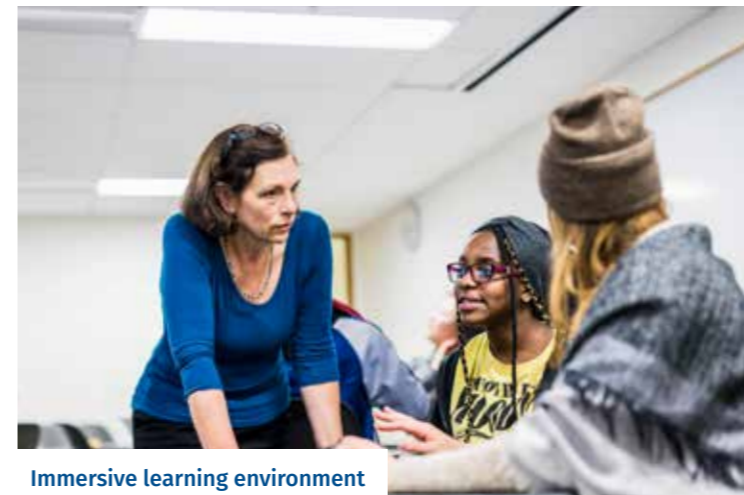
Once you have successfully completed level 3 of the Intensive English Program, you can choose to continue your study at Western in the International Study Center. By starting with this specialized study, you will enter your program ready to succeed.



Access to university facilities



Collaborate with students and staff



Immersive learning environment



Outdoor spaces to relax

International Year

The International Year (IY) program will help you adjust to your new life in the USA whilst working towards your degree.

Offered as a one, two, or three quarter program, you will study a range of subjects to develop your language and study skills, as well as credit-bearing courses that will count towards your degree in your chosen major.

After successfully completing the program with the required grades, you can continue your undergraduate degree with the confidence to engage and succeed at Western.

Your International Study Center study plan is determined by your arrival English placement test, and can be longer or shorter than your original study plan in the offer letter.

You will be required to complete your study plan at the International Study Center consecutively without quarter breaks.

You must earn a 2.0 GPA in IEP coursework in order to advance to the next quarter.

The Intensive English Program includes an academic seminar designed to assist you in your academic content course(s). You must complete the International Year with a 2.0 GPA in Intensive English coursework and a 2.0 GPA in your academic content courses in order to fully matriculate into Western.

UNDERGRADUATE STUDY PLAN

DIRECT ENTRY

ENTRY REQUIREMENTS
ENGLISH: TOEFL 79 overall | IELTS 6.5
Intake: Fall, Winter and Spring Quarters

PATHWAY:
Earn up to 20 credits that will count towards your bachelor's degree graduation requirements.

MATRICULATION REQUIREMENTS
To successfully complete the International Year, students must adhere to these matriculation requirements. 2.0 GPA and min 'C' in all English for Academic Purpose classes

ENGLISH: TOEFL 68 overall | IELTS 6.0 (no minimum bands) | Pearson Versant 55-63

1 QUARTER = 3 MONTHS

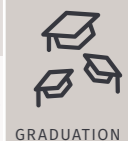
ENGLISH: TOEFL 60 overall | IELTS 5.5 (no minimum bands) | Pearson Versant 48-54

2 QUARTER = 6 MONTHS

ENGLISH: TOEFL 50 overall | IELTS 5.0 (no minimum bands) | Pearson Versant 43-47

3 QUARTER = 9 MONTHS

Intake for IY:
Fall, Winter, Spring and Summer Quarters



IY courses include:

Reading, Writing, Listening/Speaking and Grammar

Students have the opportunity to take Academic Credits which count towards their degree while in the IY.

Those course credits can include*:

- Intro to Cultural Anthropology (5 credits)
- Dance- Movement and Culture (3 credits)
- Beginning Contemporary Dance (3 credits)
- Beginning Ballet (2 credits)
- Intro to Linguistics (5 credits)
- Math Reasoning & Applications (4 credits)
- Functions & Algebraic Methods (5 credits)
- Precalculus I (5 credits)
- Precalculus II (5 credits)
- Calculus & Analytical Geometry (5 credits)
- Algebraic Applications Bus/Econ (4 credits)
- Business Calculus (4 credits)
- Art of Listening To Music (3 credits)
- Pop and Rock Music Survey (3 credits)
- Intro to Psychology (5 credits)
- Environmental Studies and Sustainability (3 credits)

*These courses are only available for IY students to take during their last quarter of the IY.



I like how inclusive it is and how much the professors are here to help you. They create an environment that enriches the learning further. Western has a lot of resources for students to continue to grow."

Mariam Kamel
Country: Egypt
Degree program: Marketing

Pre-Master's Program

The Pre-Master's Program (PMP) will help you gain the skills you need to succeed in your Masters of Business Administration program at Western Washington University.

The Pre-Master's Program is offered as a one, two, or three-quarter program preparing you for studying a Masters of Business Administration degree. We will support you to develop your English language and academic skills to succeed in your degree and your future career.

A student's International Study Center study plan is determined by her/his arrival English placement test, and can be longer or shorter than her/his original study plan in the offer letter.

Students are required to complete their study plans at the International Study Center consecutively without quarter breaks. Students must earn a 2.0 GPA in IEP coursework in order to advance to the next quarter of study. Students must complete the Pre-Master's Program with a 2.0 GPA in Intensive English coursework and a 2.7 GPA in each and all of their academic content courses in order to fully matriculate into Western's MBA program.

After successfully completing your Pre-Master's Program, you will be able to progress to your Masters of Business Administration program at Western.

Masters of Business Administration

The Masters of Business Administration (MBA) at Western has AACSB Accreditation, a distinction recognized worldwide. This puts Western among the top 5% of business schools globally.

During your MBA you will receive specialized mentorship in small classes and dedicated career services. You will acquire technical, managerial and leadership skills which you will apply in a consulting capstone project where you will advise a business on start-up, growth or pivot strategies. This varied coursework is designed to help you build a comprehensive foundation for growth throughout your career.

Upon completion of the MBA program you will have gained the skills needed to be an adaptable, hardworking leader ready to build on your current career or enter a new field.

PRE-MASTER'S STUDY PLAN

DIRECT ENTRY

ENTRY REQUIREMENTS

ENGLISH: TOEFL 79 overall | IELTS 6.5
Only available for Fall Quarter intake

PATHWAY:

Earn up to 12 credits before matriculating into your graduate degree.

These credits are not a part of your MBA graduation requirements.

MATRICULATION REQUIREMENTS

To successfully complete the pathway program, students must adhere to these matriculation requirements.

UNIVERSITY DEGREE TIMELINE

ENGLISH: TOEFL 70 overall | IELTS 6.0 (no minimum bands) | Pearson Versant 55-63
Available for Summer Quarter intake

1 QUARTER = 3 MONTHS

ENGLISH: TOEFL 60 overall | IELTS 5.5 (no minimum bands) | Pearson Versant 48-54
Available for Winter or Spring Quarter intake

2 QUARTER = 6 MONTHS

ENGLISH: TOEFL 50 overall | IELTS 5.0 (no minimum bands) | Pearson Versant 43-47
Available for Fall and Winter Quarter intake

3 QUARTER = 9 MONTHS

PRE MASTER'S PROGRAM

MBA YEAR

Q1 Q2 Q3 Q1 Q2 Q3 Q4 Q5



GRADUATION

PMP courses include:

Reading, Writing, Listening/Speaking, Business ESL and Grammar.

Students during the PMP will be in classes to help prepare them for the MBA but these credit bearing classes will not go towards their MBA. The business classes students can take to prepare them for a successful MBA include:

- Topics in Marketing
- Calculus with Applications in Business and Economics
- Financial Accounting

MBA graduates achieve an average starting salary increase of **8% to 65%** higher than median salaries achieved by undergraduates who enter the job market with only an undergraduate degree.

Six months after graduating, MBA cohorts report a **95% to 100%** job placement rate.

how to apply

To apply to study at Western Washington University International Study Center, you will need to complete an application form and submit the relevant supporting documents.

We are here to help and answer any questions you may have about your application. Advisers speak a variety of languages and understand several more. We will do our best to contact you in your preferred language.

Supporting documents may include:

- A copy of your valid passport
- Current I-20 and visa (if currently studying in the U.S.)
- Proof of English language proficiency: IELTS, TOEFL, Pearson Versant, or Embassy
- Certified copies of academic records, including transcripts and school leaving certificates
- Certified financial statements and Affidavit of Support

Graduate applicants may need to provide:

- Resume
- GRE/GMAT
- Personal Statement

Apply online:
international.wwu.edu

Apply via a local agent:
Please contact your agent if you have any questions.

Bellingham

#1

College town in Washington

(reviews.org, 2020)

#33

Best Value Schools, Regional Universities West

US News and World Report, 2020

#72

Of Best Values in Public Colleges for out-of-state students

(Kiplinger, 2019)

Top

10

College with the best student life in Washington

(Niche, 2019)

BELLINGHAM, WA
POP. 85,000

VANCOUVER, CANADA
55 MI / 89 KM

SEATTLE, WA
90 MI / 145 KM

SALT LAKE CITY, UT

LAS VEGAS, NV

CHICAGO, IL

BOSTON, MA
NEW YORK, NY

LOS ANGELES, CA

Disclaimer

This brochure is issued for the general guidance of students considering entry to Western Washington University International Study Center in 2020.

The information is correct at the time of going to press, and the programs and services described herein are those which Study Group is planning to offer.

However, Study Group reserves the right to amend, add or remove any program and/or services set out in this brochure and/or the timetable, delivery, content syllabi, and assessment of such programs.

The University (where applicable) also reserves the right to amend the regulations governing those programs without prior notice. Study Group therefore strongly recommends that immediately prior to making any application to Study Group or accepting any offer from Study Group, students should refer to the most up-to-date version of the program descriptions and specifications and the regulations on the Western Washington University International Study Center website.

Study Group also reserves the right to make variations to the content and method of delivery of the programs and services, to discontinue programs and services and/or to combine and merge programs, if such action is reasonably considered to be necessary by Study Group.

Applicants to Study Group programs will be notified as soon as practicable of any material changes likely to have a bearing on their applications, such as cancellation of, or major modification to programs offered, changes to accommodation provision, or fees and charges to be levied where applicable.

Neither the University nor Study Group shall be liable for any errors or omissions that may be contained.



Western Washington University International Study Center is part of Study Group, a global leader in preparing students for international academic success and rewarding careers through a life-changing learning experience.

To learn more, please visit studygroup.com

To access information for agents, please visit agent.studygroup.com

WWU is an equal opportunity institution.

